

STRUCTURAL MODULARS, INC.

The Donford



TWO-STORY
1792 SQ FT

Breakfast Nook
3 Bedrooms
2 Full Baths 1 Half Bath
Great Room

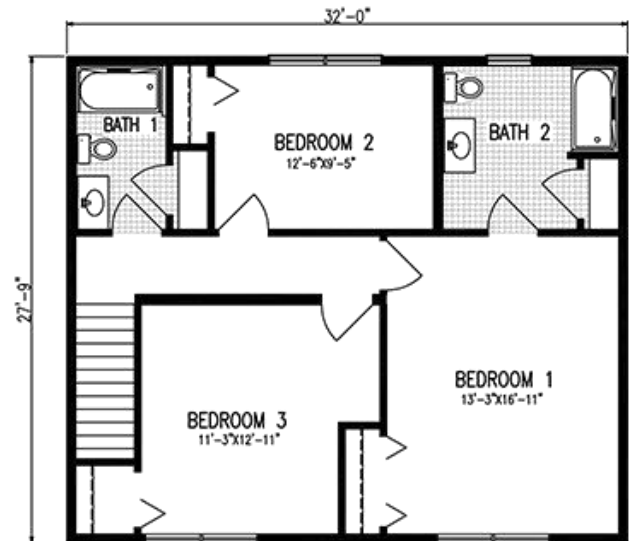
Overview: The Donford is a spacious 3 bedroom, 2 1/2 bath 2 story. Plan shows a spacious kitchen/breakfast area open to living room, 1st floor laundry, and stairs on end wall of house for more of an open feeling.

Notes: All floor plans can be customized to fit your needs. We design and construct the modular to your specifications.

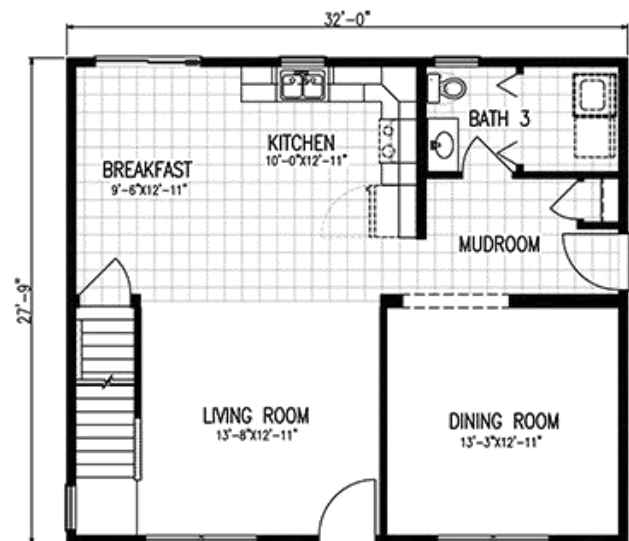
Elevations may include additional builder construction such as porches, garages, decks, etc.

Structural Modulares, Inc.

101 Southern Avenue
P.O. Box 315
Strattanville, PA 16258
Phone: 800.216.7849
Fax: 814.764.5852
E-mail: info@smihomes.com



2ND FLOOR- 896 SQ FT



1ST FLOOR- 896 SQ FT