

The Tionesta



STRUCTURAL MODULARS, INC.

www.smihomes.com



CAPE COD

672 SQ FT – 1st floor

170 SQ FT – 2nd floor

Galley Kitchen

1 Bedroom

1 Full Bath

Optional Loft

Overview:

Perfect for those who want to downsize or someone just starting out that enjoys the life of a minimalist. A fireplace could easily be added to this floor plan. Add a wraparound porch and enjoy the cool breeze on a summer's evening or a cup of coffee in the early morning.

Notes:

All floor plans can be customized to fit your needs. We design and construct the modular to your specifications. Elevations may include additional builder construction such as porches, garages, decks, etc.

Structural Modulares, Inc.

101 Southern Avenue

P.O. Box 315

Strattanville, PA 16258

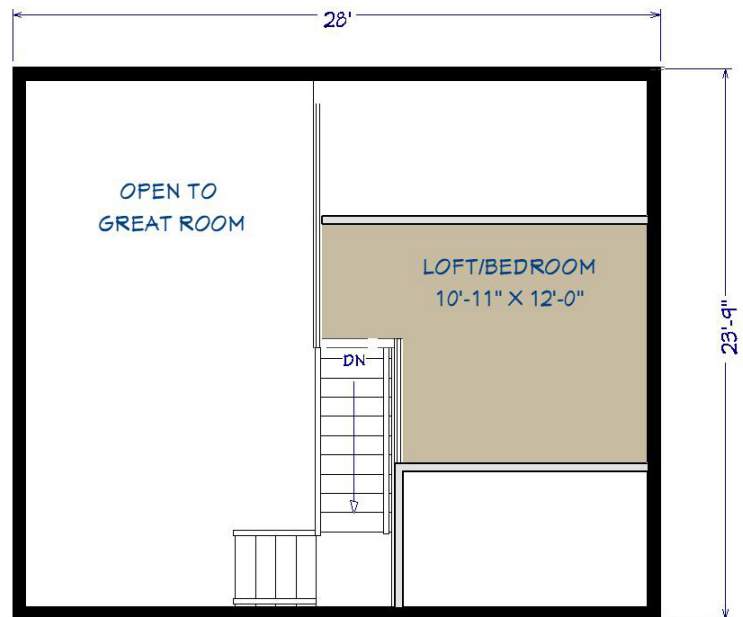
Phone: 800.216.7849

Fax: 814.764.5852

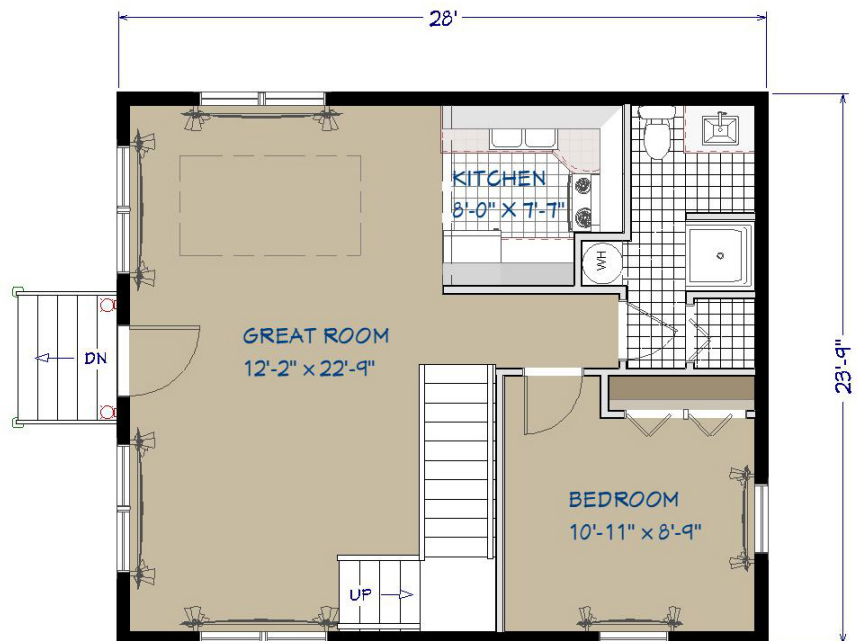
E-mail: info@smihomes.com

Website: smihomes.com

Design • Construct • Live



OPTIONAL SECOND FLOOR
170 SQ. FT.



FIRST FLOOR - 672 SQ. FT.